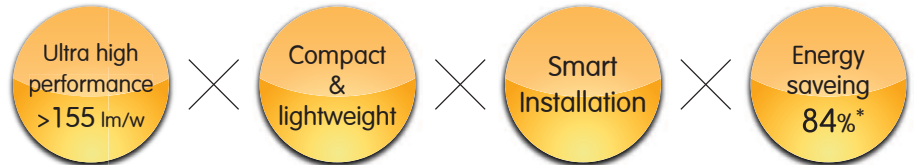




For your smart choice



\*Compared with 400W mercury lamp highbay

Ultra high performance  
>155 lm/w



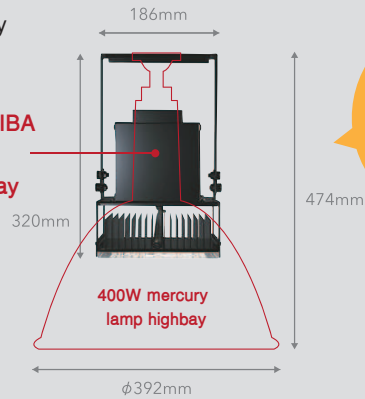
Compact & lightweight

## Ultra high performance with compact size & lightweight.

Toshiba cutting-edge technology realized over 155lm/w efficacy which is extremely high performance with very compact body.

It outperforms other similar products in the market. Small size, light weight makes the installation work much easier and safer.

TOSHIBA LED Highbay



only **3.6kg**

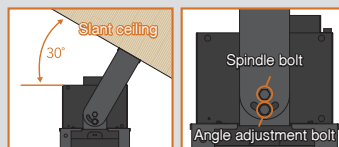
22,000lm with such compact size!!

Smart installation

## Smart installation

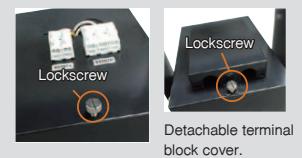
### 1 Available for slant ceiling (up to 30°)

Easy fit to the slant ceiling.



### 2 Easy access to terminal block

Terminal block cover can be easily opened by unscrewing the lockscrew.



### 3 Unique undersurface cover to prevent scratch

4 projections at the corners to protect the cover from scratch.



### 4 Enough space over terminal block

Enough space for cable connection work.







**84% energy saving!!!**  
by extraordinary high performance over 155lm/W

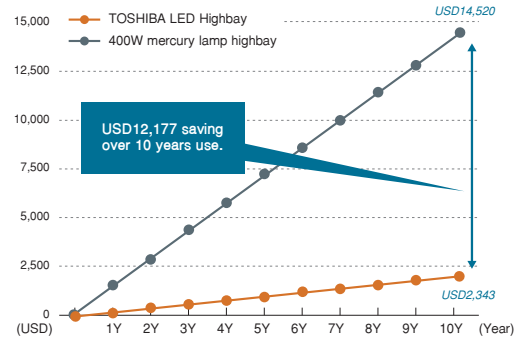
**Running cost comparison**

**Comparison with 400W mercury lamp highbay**

Product	400W mercury lamp highbay	TOSHIBA LED Highbay
		
Model	SN-4044A+HF400X	LEDTHJ00100N50
Number of fixture	10 units	10 units
Power consumption per unit	440W	<b>71W</b>
Total power consumption	4,400W	<b>710W</b>

Energy saving of **84%**

\*Compared with 400W mercury lamp highbay

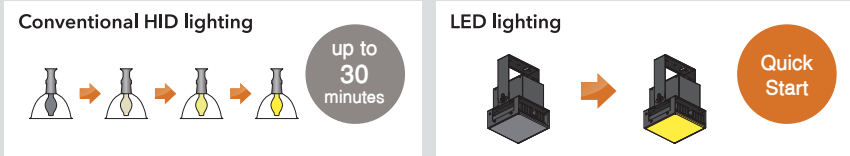


[Calculation condition] ○ Annual operation time: 3,000h ○ Number of fixture: 10 units ○ Rate of electric utility: USD 0.11/kWh

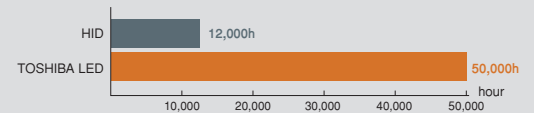
**More Benefits**

**Instant start**

Instant start up is a big advantage over HID lamps. It can quickly recover after power failure and easy to save energy by frequent switching off.



**Long life (more than 4 times)**



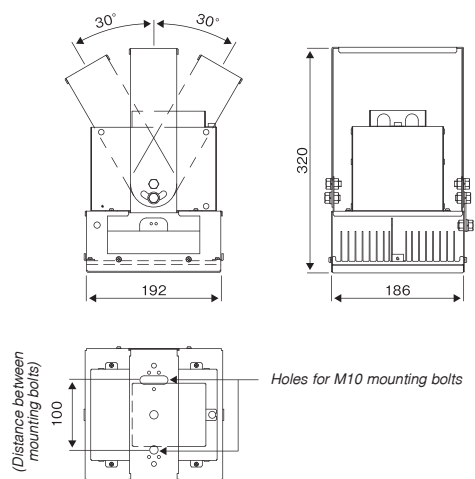
**No UV rays**

Attracts fewer insects



**Specifications**

	Equivalent to 250W metal-halide lamp and 400W mercury lamp fixture	Equivalent to 400W metal-halide lamp fixture
Item number	LEDTHJ00100N50	LEDTHJ00200N50
Rated voltage	AC 220V-242V	
Power consumption (at 200V)	71W	138W
Luminous flux	11,200lm	22,000lm
Efficacy	157.7lm/W	159.4lm/W
Color temperature	5000K	
CRI	80	
Beam angle	Wide (112°)	
Weight	3.5kg	3.6kg



Common specifications ○ Ambient temperature : -10 °C to 40 °C (temporarily up to 50 °C) ○ With safety wire & eye bolt (option)

Thai Toshiba Lighting Co., Ltd.

144 Moo 5 Bangkadi Industrial Park, Tambon Bangkadi, Amphur Muang, Pathumthani 12000  
Tel. +66(0) 2 501 1425-9, +66(0) 2 019 6102 Fax. +66(0) 2 501 1431, +66(0) 2 019 6109

ส่องสว่าง ยาวนาน เศรษฐกิจคุณ



www.toshibalight.com